



# LOCAL LAND SERVICES

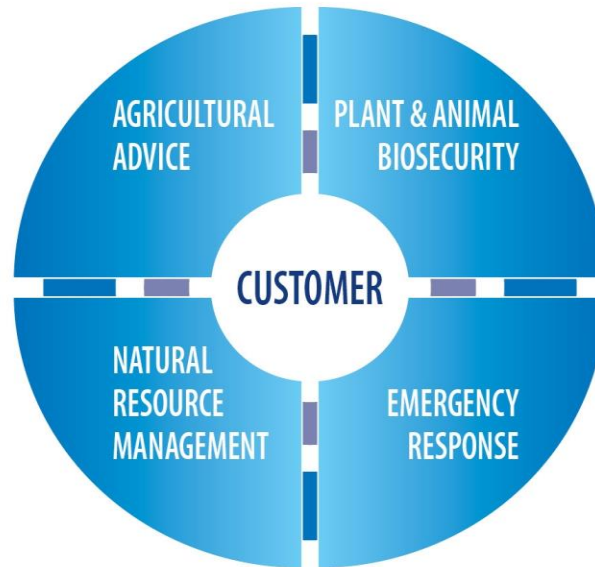
Productive Primary Industries, Connected Catchments



## Local Land Services Functions and Service Delivery

# LOCAL LAND SERVICES

Productive Primary Industries, Connected Catchments



**Local Land Services (LLS) will be customer focussed, delivering on regional priorities for rate payers, landholders and the community in line with government policy. Clients will have access to services promoting integrated land use and management, resulting in economic, environmental and community benefits.**

**Functions and services provided by the LLS will include:**

- Agricultural production advice: supporting sustainable productive food and fibre industries;
- Biodiversity and natural resources protection and enhancement;
- Biosecurity services protecting New South Wales' economy, environment and community from pests, weeds and disease;
- Support for the people of NSW to deal with emergencies, in particular those related to biosecurity threats and natural disasters.

## Background

The creation of a single regional provider of services for agricultural production, natural resource management (NRM), biosecurity and emergency management will allow better and more effective coordination of activities and provide a single point of contact for LLS clients.

Through LLS, landholders will have access to a network of resources, including specialists. Advice will be available that will contribute to:

- building resilience and increasing capacity to manage seasonal variability and natural disasters;
- protecting farms, livestock and plants from pests, weeds and diseases (biosecurity);
- improving farm productivity and protecting and improving biophysical resources, so that properties can be passed on to future generations in better condition.

The general community will benefit from the creation of the LLS in knowing that there will be an integrated approach to the management of primary production and the environment across the entire landscape.

As regionally based organisations, LLS will aim to engage the community and address regional priorities in the most efficient, effective and pragmatic way.

Local Land Services will enable the community, primary producers and other stakeholders to consider issues affecting NRM, Agricultural Production, Biosecurity and Emergency Management at local and regional levels and will provide a formal avenue for these issues to be promoted and addressed at a state level where necessary. LLS will also have an important role in helping government to shape its policies, strategies and legislation in these areas.

Some services such as those associated with biosecurity threats and natural disasters and some aspects of natural resource management will be legislated as LLS responsibilities and will be implemented consistently across the state under a series of formal agreements. Regional Boards will be able to tailor advisory services to their specific needs based on consultation with stakeholders and funding availability.

LLS will be able to deliver services through its own staff or through other agencies, private providers, contractors or industry experts.

LLS functions and services will be delivered through a combination of Commonwealth and State funding, grants, rates and user pays sources and ideally will be complemented by leveraging third party and/or co-investment.

The range of functions and responsibilities is broad. LLS Regional Boards will be required to ensure their investments target the priority needs of their regions as

well as the priorities of the NSW and the Australian Governments. The extent and nature of other services will be dependent upon the resources available.

The functions of LLS will contribute to State 2021 goals, improving economic, environmental and social outcomes for present and future generations.

## **Shared Functions and Responsibilities**

### **Community and Stakeholder Representation and Support**

Local Land Services will enable the community, primary producers and other stakeholders to consider issues affecting NRM, Agricultural Production, Biosecurity and Emergency Management at local and regional levels and will provide a formal avenue for these issues to be raised and addressed at a state level where necessary. The LLS will have an important role in helping government to shape its policies and strategies in these areas.

LLS will support community efforts in the management of natural resources, agricultural production and biosecurity by ensuring;

- Community engagement in planning and implementation;
- Regional plans, such as Catchment Action Plans, coordinate activities and investment across the region;
- Delivery of incentives for resource management programs;
- Recognition and respect for cultural heritage;
- Effective management of travelling Stock Reserves.

LLS will help communities and other stakeholders to explore and develop environmental enterprises that deliver targeted social or community benefits and that stimulate and re-engage economic development and social outcomes for communities in regional and rural NSW.

LLS will help rural industries and communities to become more resilient to emergencies by helping them with prevention, preparedness, response and recovery programs for:

- Animal pests and disease emergencies;
- Plant pest and disease emergencies;
- Flood, storm and bushfire emergencies.

LLS will be a key supporting organisation in the state emergency management arrangements and will maintain an appropriately trained workforce.

### **Extension and Education**

LLS will support profitable and sustainable agriculture and protect environmental assets by delivering independent and unbiased information through extension, advisory and education services.

These services will be tailored to meet local and regional requirements and may be provided through structured courses, workshops, field days, farmer groups, demonstrations and a mix of communication tools including publications, e-delivery and newsletters. Staff will also be able to respond to *ad hoc* requests for advice, including phone enquiries and office visits.

Staff will:

- Provide advice on the management of natural resources including biodiversity, and the integration of native vegetation into productive and sustainable landscapes;
- Provide independent and unbiased advice to rural producers and other stakeholders underpinned by current science. Advisory and extension services may cover managing for climate variability, soil health, cropping, pasture, rangelands, livestock and horticultural enterprises under both irrigated and dryland systems;
- Provide advice on the management of weeds, pests and diseases to protect domestic and international market access, productivity and the environment;
- Promote and facilitate the adoption of new scientific research to improve sustainable agricultural production, biosecurity and resource management.

These services will be delivered in a whole-of-landscape context to accommodate economic, environmental and community expectations.

## **Regulation and Compliance**

The LLS will play a key role in the protection of the economy, environment and community from pests, weeds and diseases delivering regulatory functions under a range of legislation which will secure biosecurity objectives for NSW and the national biosecurity framework.

The LLS will undertake regulatory activities that will:

- Safeguard access to domestic and export markets for NSW primary produce;
- Reduce the impact of pests, weeds and diseases on primary production and our environment;
- Minimise chemical contamination of our primary produce;
- Protect the community from diseases that come from animals;
- Support community understanding, implementation and compliance with the *NSW Native Vegetation Act, 2003*, through a range of regulatory and advisory services;
- Assist DPI and other enforcement agencies to meet the Government's animal welfare priorities;
- Work with government and the community to develop alternative methods of achieving outcomes without the need for legislation and regulation; and
- Provide comment to government on proposed new legislation and regulations to ensure that they are achievable and enforceable.

## Specific Functions and Responsibilities

### **Agricultural Production Advice and Extension**

LLS will provide independent and unbiased advice to rural producers and other stakeholders underpinned by current science. Agricultural production focused officers within LLS will maintain strong links to the Department of Primary Industries (DPI) researchers and a range of other research and development providers.

Agricultural advisory services will be tailored to meet local and regional requirements and may be provided through structured courses, workshops, field days, farm walks, farmer discussion groups, demonstrations and a mix of communication tools including publications, e-delivery and newsletters. Staff will also be able to respond to *ad hoc* requests for advice, including farm visits, phone enquiries and office visits.

Depending on regional enterprises, advisory and extension services may include cropping, pasture, rangelands, livestock and horticultural enterprises under both irrigated and dryland farming systems.

These services will be delivered in a whole-of-landscape and/or sustainable practice context which accommodates economic, environmental and social/community considerations.

### **Key Functions & Services**

LLS will support profitable and sustainable agriculture by delivering an extension and advisory service to landholders and producers and may provide services in areas such as :

- Livestock Genetics and selection and breeding;
- Reproductive management;
- Livestock production;
- Grazing management (including Prograze);
- Product supply chain awareness, markets and business resilience;
- Crop & pasture variety recommendations including fodder systems;
- Broadacre crop, horticulture & pasture management, including:
  - Soil management (biological, chemical and physical aspects);
  - Nutrition (fertiliser and ameliorants advice);
  - Weed, disease & pest management in both dryland and irrigated farming systems;
  - Irrigation management (scheduling, system development and performance, training eg PROwater);
- Assist police and other government agencies in delivering legislated law enforcement activities eg Drug Misuse Trafficking Act (cannabis ID), stock theft, pesticide abuse, animal welfare etc;
- Promote and facilitate the adoption of new scientific research to improve sustainable agricultural production through linkages with DPI researchers;

- Coordinate and promote LLS corporate profile and give advice at major regional field days and events eg Orange, Henty, Mudgee.
- Provision of localised advice on managing seasonal variability to landholders and the NSW Regional Assistance Advisory Committee

## **Plant and Animal Biosecurity**

LLS will play a key role in delivering biosecurity objectives for NSW and will be integral to the national biosecurity framework.

Biosecurity is defined as the protection of the economy, environment and community from pests, weeds and diseases. Biosecurity threats can impact on individual farm production, and also have regional, state and national impacts. Major exotic biosecurity threats such as foot and mouth disease or UG99 wheat rust can have a devastating effect on the broader economy through the loss of markets and the disruption of businesses along the supply chain. It is estimated that an outbreak of foot and mouth disease would reduce Australia's gross domestic product by between \$8 billion and \$13 billion in the first 12 months and cause serious and long lasting business, social and community disruption.

Global trade, increased international travel, climate change, population growth and the mass migration of communities affected by war and climate has increased biosecurity risk, particularly for Australia which has historically had the advantage of being a relatively isolated island nation.

In order to meet these increased challenges, Australian governments continue to work with industry and the general community to ensure that an effective framework for biosecurity is in place. Biosecurity needs to be recognised as a shared responsibility and biosecurity strategies such as the draft NSW Biosecurity Strategy are increasingly based on that principle.

### ***Key Functions & Services***

- Animal and plant pest and disease surveillance;
- Livestock flock and herd health, traceability and animal welfare;
- Delivery of terrestrial and aquatic pest and disease prevention, management, control and eradication programs, including extension and regulatory functions;
- Delivery of chemical residue prevention, management and control programs, including extension and regulatory functions;
- Maintenance of records and subsequent reporting on the disease status and chemical residue status of stock and land;
- Provision of animal and plant health services, including regulation, market access, technical advice and services related to plant and animal production and the spread of pests and diseases from infected or infested plants and animals in a district;
- Regulation and management of declared terrestrial and aquatic animal and plant pests including engagement with occupiers and land managers to facilitate compliance;

- Implementation and ongoing management and compliance with the National Livestock Identification Scheme and property identification codes;
- Meeting of legislative reporting requirements and community expectations for animal welfare;
- Coordination of programs for declared pests and nuisance animals;
- Assisting DPI and other enforcement agencies to meet the Government's animal welfare priorities.

## **Emergency Management**

The emergency management arrangements in NSW are legislated through the *State Emergency and Rescue Management Act 1989*. The Act provides for:

- The preparation of a State Emergency Management Plan (SEMP) and subordinate plans to ensure a co-ordinated response for necessary operations;
- The establishment of Emergency Management Committees at State, District and Local Government levels; and
- Arrangements for controlling emergency operations.

Under the SEMPS LLS will be a key supporting organisation that will participate in emergency management committees at district and local levels, maintain an appropriately trained workforce and contribute to prevention, preparedness, response and recovery activities for biosecurity emergencies and natural disasters.

### ***Key Functions & Services (Emergency Prevention, Preparedness, Response and Recovery)***

Local Land Services will:

- Contribute to planning, training and other activities required to maintain capacity in prevention, preparedness, response and recovery to emergencies;
- Assist in the implementation of biosecurity and general emergency prevention, preparedness, response and recovery programs; and
- Contribute to the development of state and national biosecurity and emergency management policies.

Local Land Services, including staff, facilities and equipment will be made available during a natural disaster or biosecurity emergency for purposes such as:

- Agricultural damage assessment and reports including the valuation of stock and pastures;
- Aerial surveillance, information gathering and reporting;



- Liaison with landholders and provision of biosecurity educational, livestock and agronomic advice;
- Assisting with decontamination disinfestation procedures;
- Exercising administrative, operational or regulatory functions within an emergency (State and Local Coordination Centres);
- Assisting in the coordination of emergency relocation and feeding of livestock and the care of companion animals during evacuations; and
- Assisting with animal welfare activities including destruction and disposal of stock.

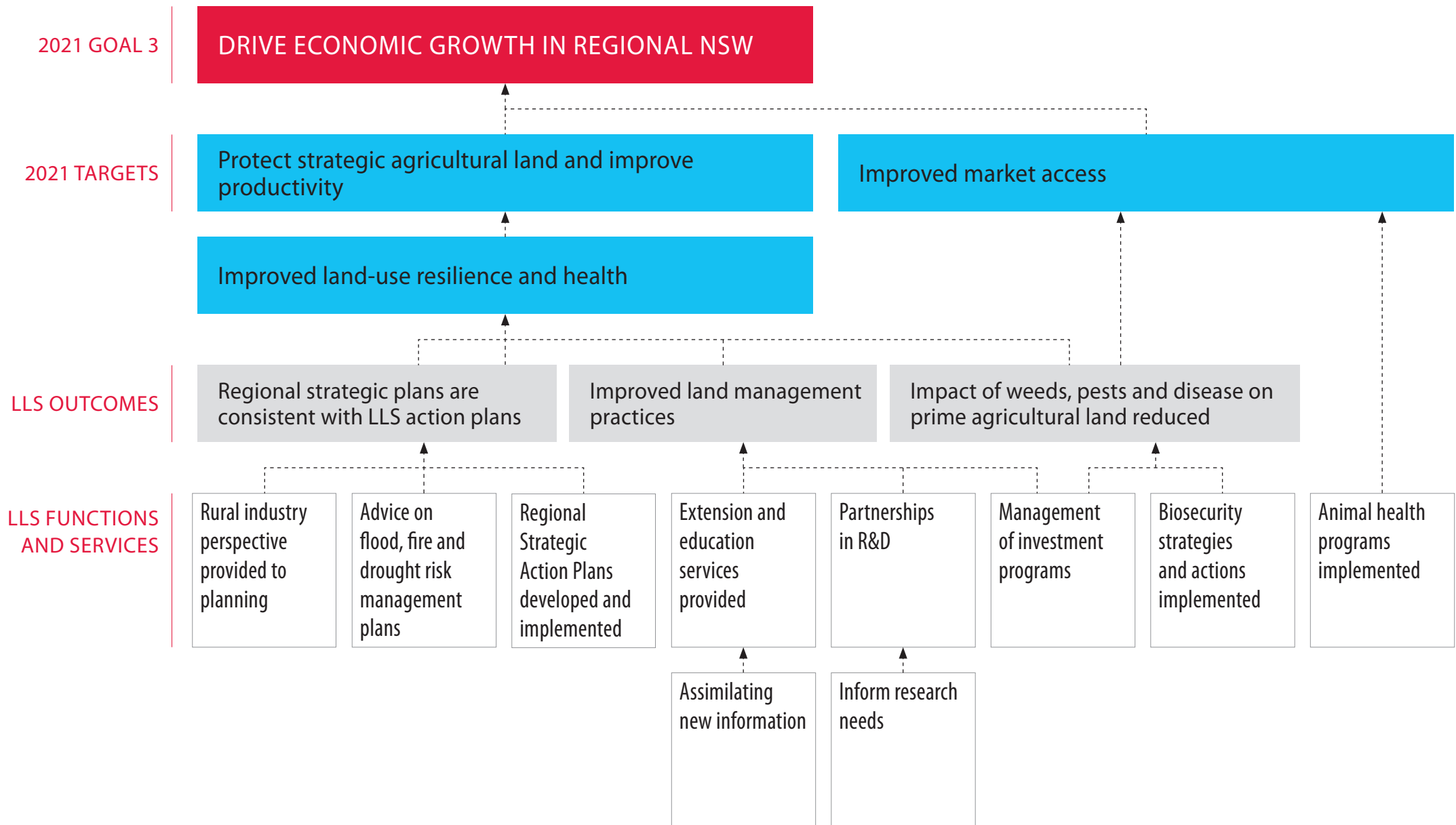
## **Natural Resource Management**

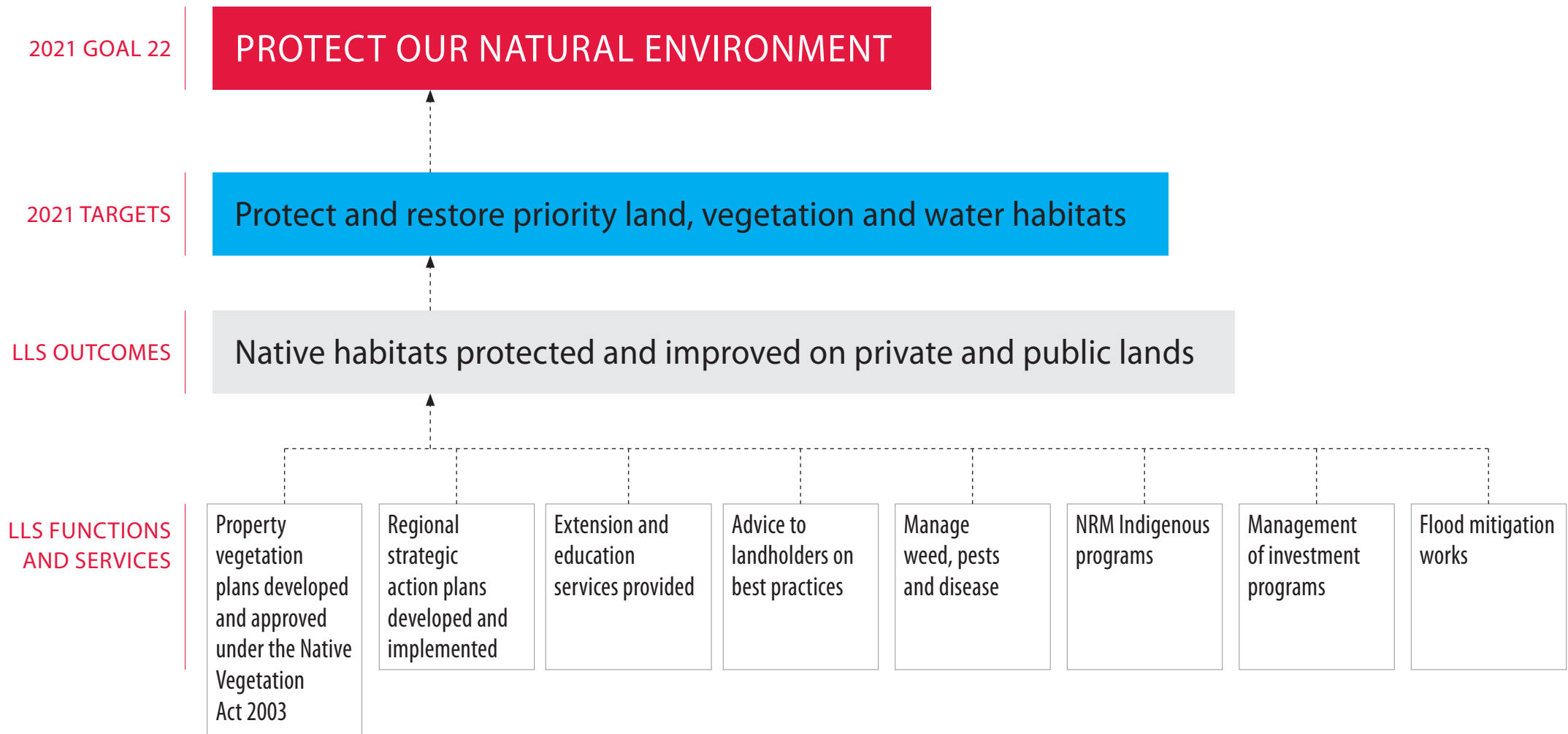
Natural resource management (NRM) is generally defined as the management of natural resources to improve environmental, social and economic outcomes for present and future generations. This includes water, native vegetation, soil, biodiversity, freshwater, coastal and marine environments and forestry resources. NRM also contributes to the resilience of communities against extreme events and the economy. Natural resource management underpins the functions delivered by LLS, contributing to the sustainability of our agricultural and fisheries resources, food and water security and biosecurity whilst also supporting socio-ecological systems.

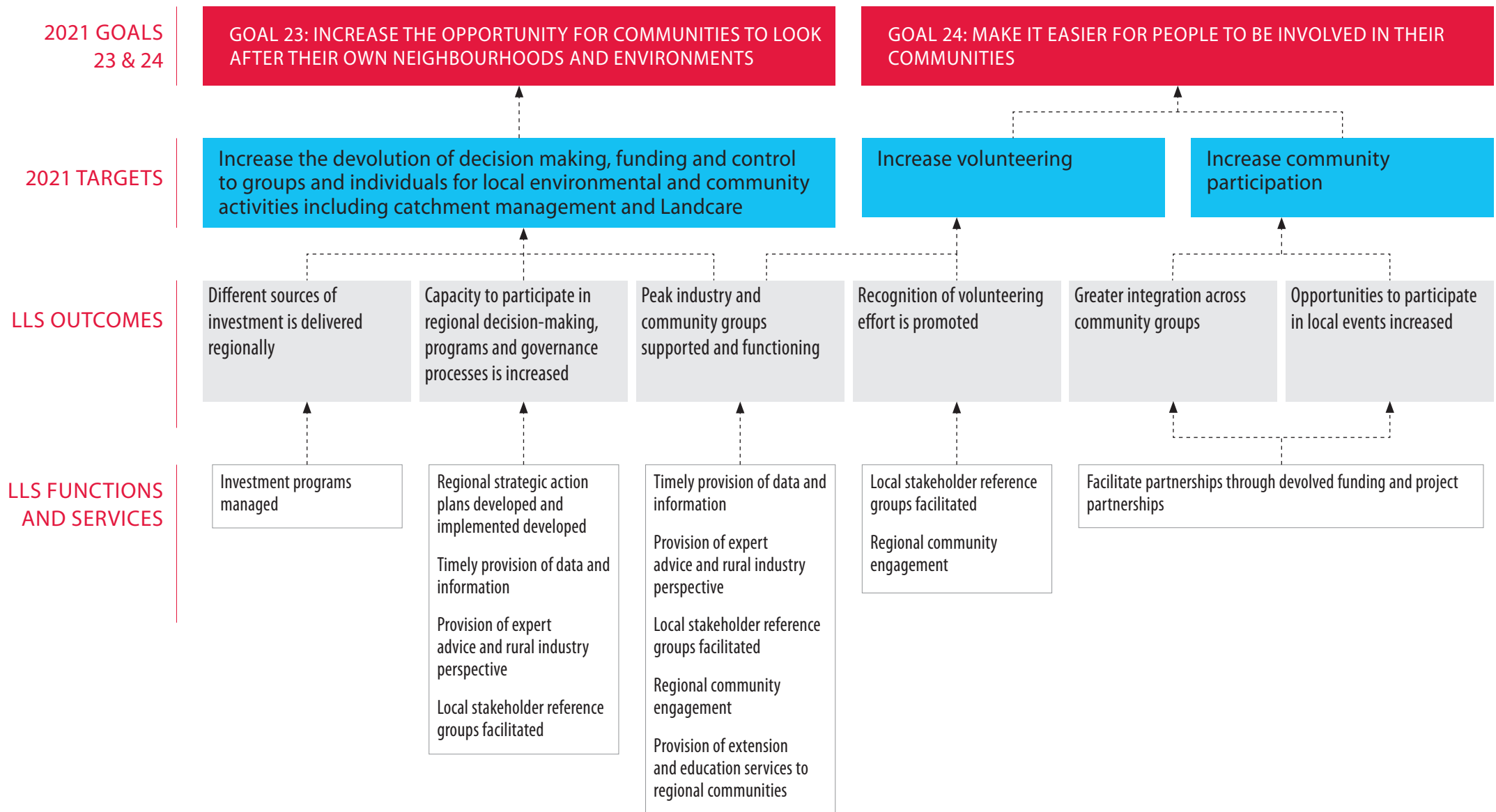
### ***Key Functions & Services***

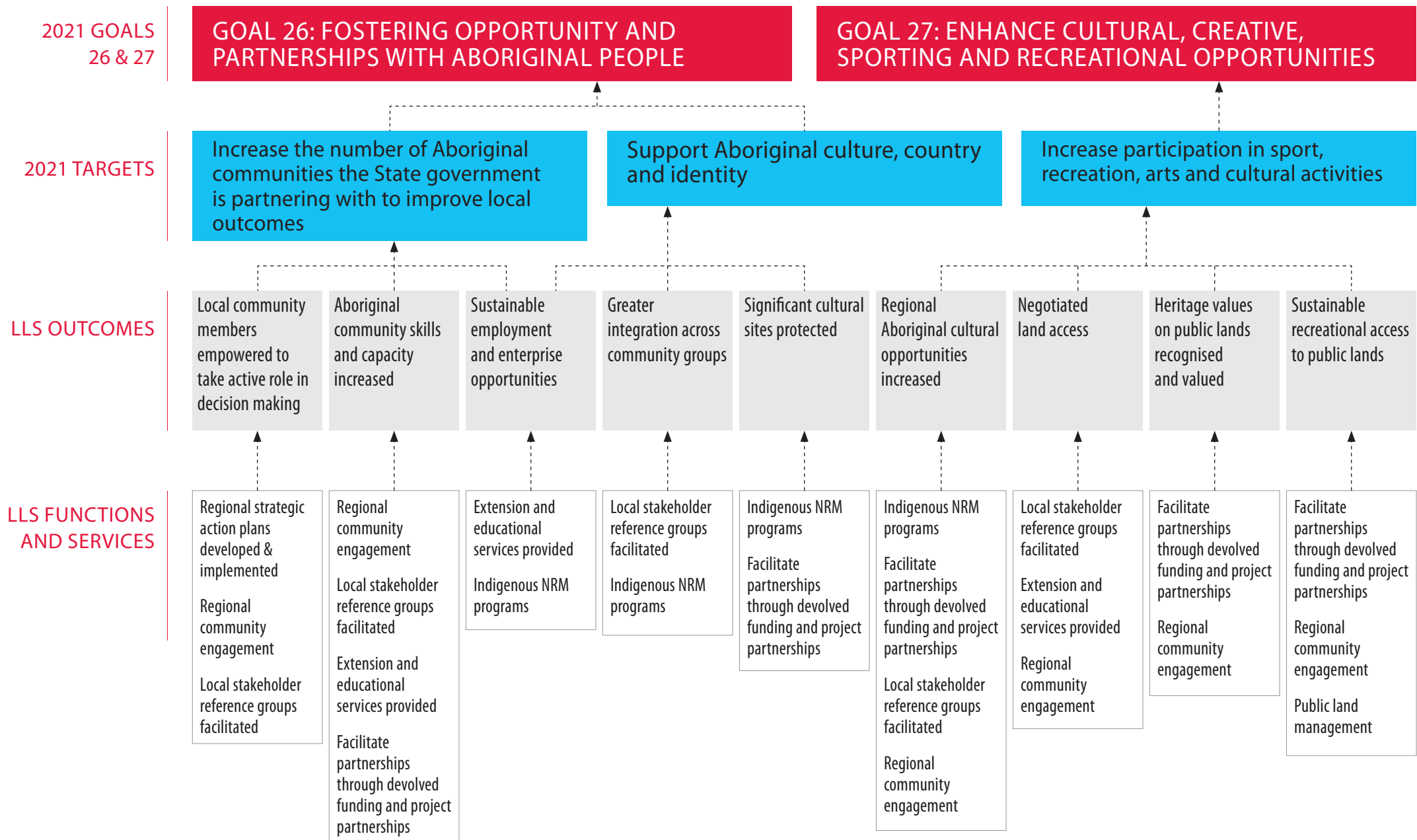
- Undertake natural resource planning, operations, investment and decision-making functions at regional levels to ensure the proper management of natural resources in the social, economic and environmental interests of the State and its communities.
- Ensure State-wide standards and targets of the Natural Resources Commission are included in LLS Regional Action Plans.
- Prepare annual implementation programs setting out the catchment activities proposed for the coming financial year.
- Incorporate sound scientific knowledge in the development and delivery of NRM programs that enhance landscape health, contribute to productive enterprises and build vibrant communities.
- Provide and resource a framework for financial assistance and incentives to landholders that result in improved natural resource management.
- Increase natural resource management capacity by supporting community NRM infrastructure and building social capital and through the provision of educational and training courses and materials for rural and regional communities including:
  - Integrated Land Management Program (Training);
  - Weed management advice and control programs;
  - Soil erosion and salinity advice and control programs;

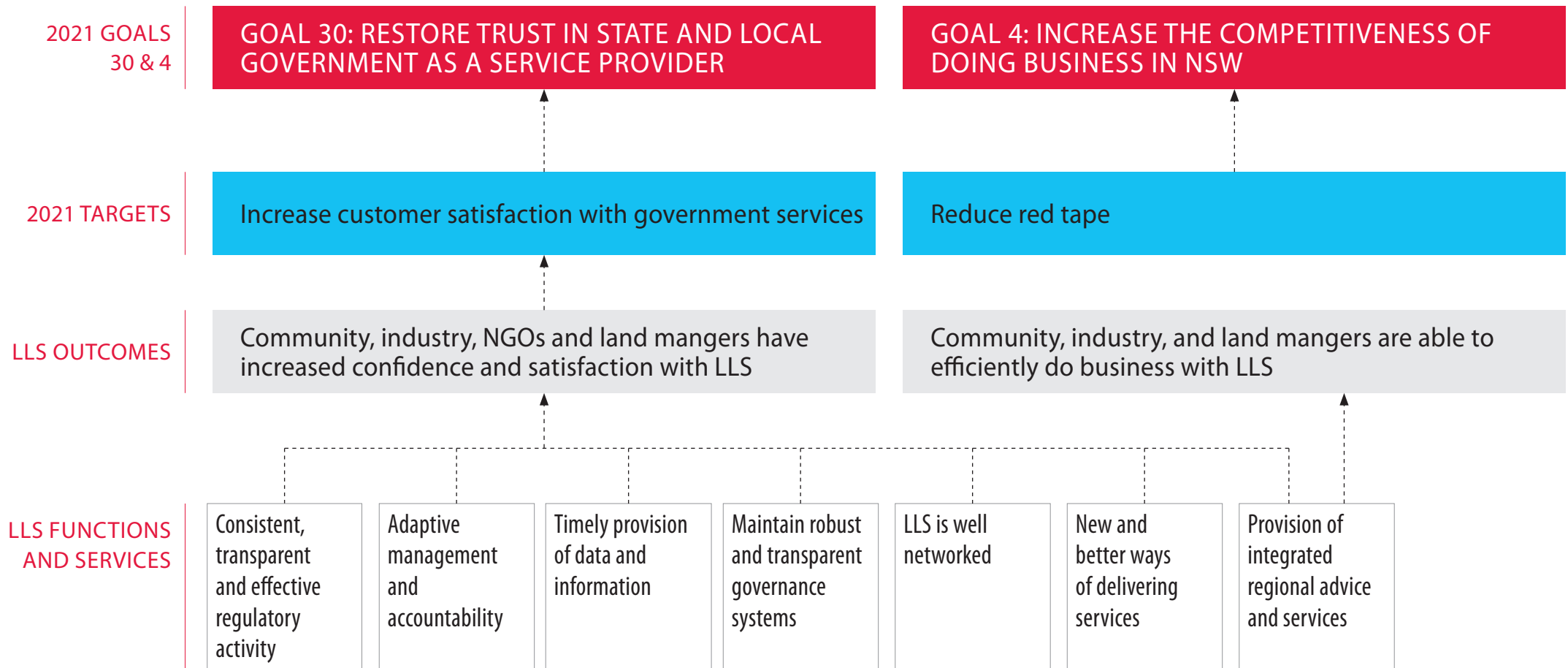
- Citizen Science programs;
  - Coast, Estuary and marine related advisory programs;
  - Threatened species conservation programs;
  - Native vegetation management advice;
  - Rangeland management advisory programs;
  - Environmental water management planning.
- 
- Property Vegetation Plans under the Native Vegetation Act 2003 on behalf of the Minister for the Environment. This also includes:
    - Assessing clearing and offset proposals;
    - Negotiating Property Vegetation Plans;
    - Monitoring PVP compliance.
  - Undertake a range of NRM indigenous programs with local partners.
  - Provide advice on the preparation of Floodplain Risk Management Plans.
  - Provide guidance for land management activity that relates to the NSW cultural heritage legislation.
  - Management of Travelling Stock Reserves.

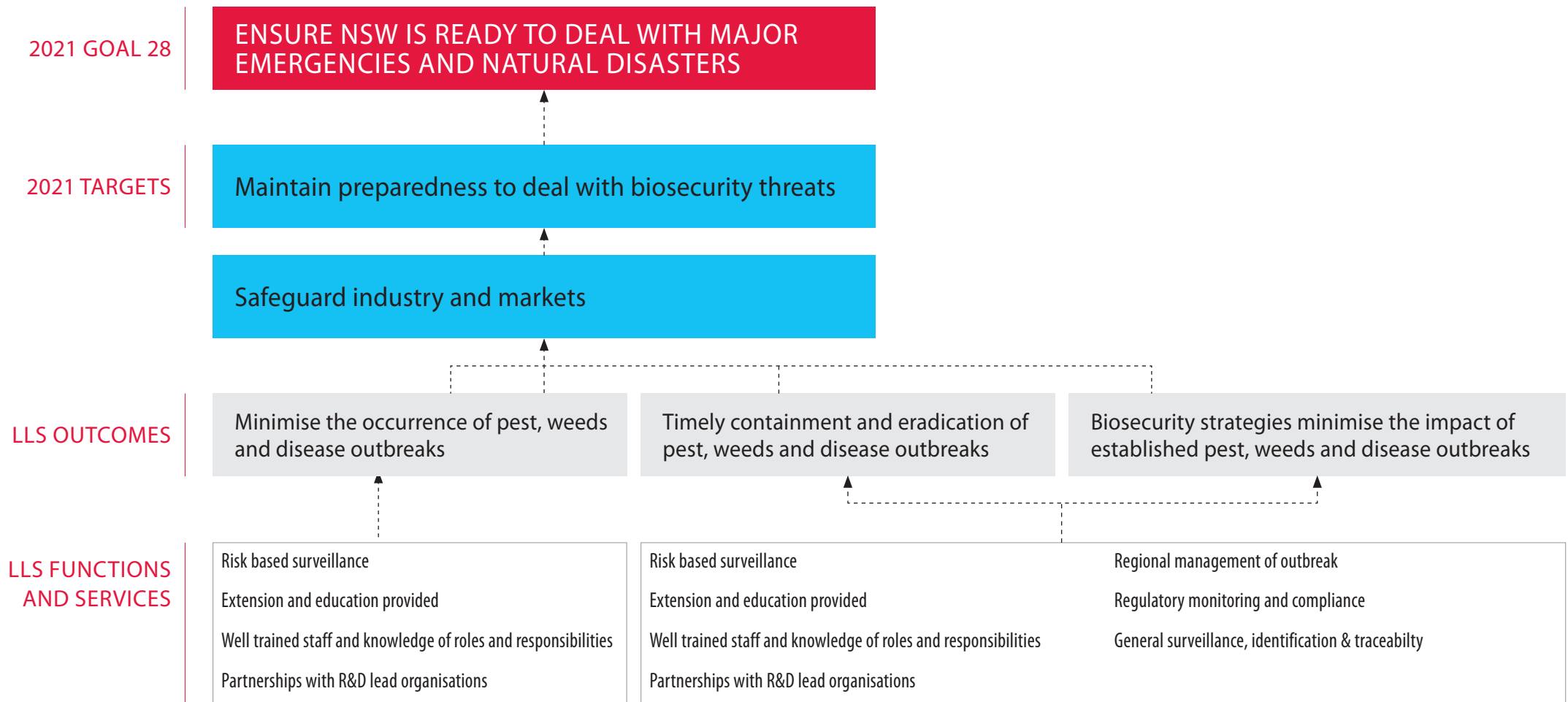














2021 GOAL 28

# ENSURE NSW IS READY TO DEAL WITH MAJOR EMERGENCIES AND NATURAL DISASTERS

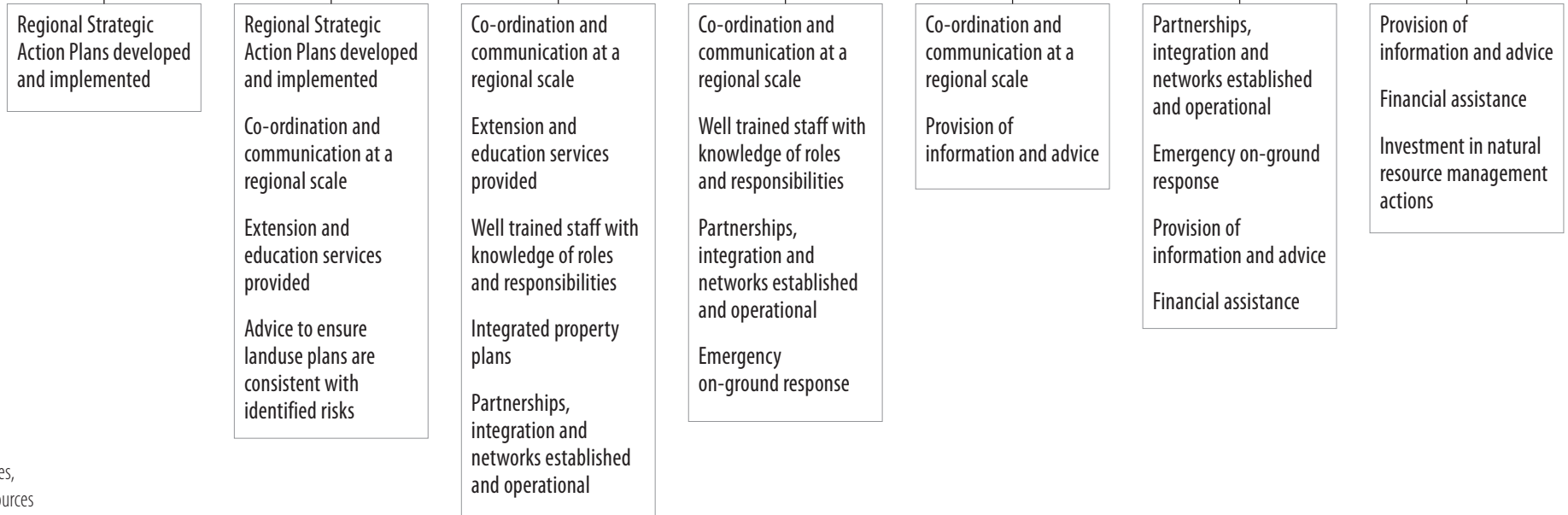
2021 TARGETS

## Defend against fire and floods

LLS OUTCOMES

PREVENTION		PREPAREDNESS	RESPONSE		RECOVERY	
Landscapes* are more resilient to impacts of Natural Disasters	Consequence of flood and fire is mitigated	Land managers and community are prepared to manage risks	Timely and effective response to management of stock loss and property damage	Government and community informed	Land managers and enterprises have quick recovery to production	Impact on environment and communities is minimised

LLS FUNCTIONS AND SERVICES



\*Landscapes = enterprises, businesses, landowners, community, natural resources  
 The coordination role during response is still to be confirmed